



Jean-Marie RAVEL

Laboratoire de génétique médicale, service de génétique clinique, CHRU Nancy ; Université de Lorraine, Inserm, NGERE, Nancy

An innovative solution to build simultaneously a family pedigree, downloadable in BOADICEA and CanRisk files, and the clinical history of a family.

- Free and open source software
- Simple interface, compatible with any computer with a recent browser

Two connected inputs:

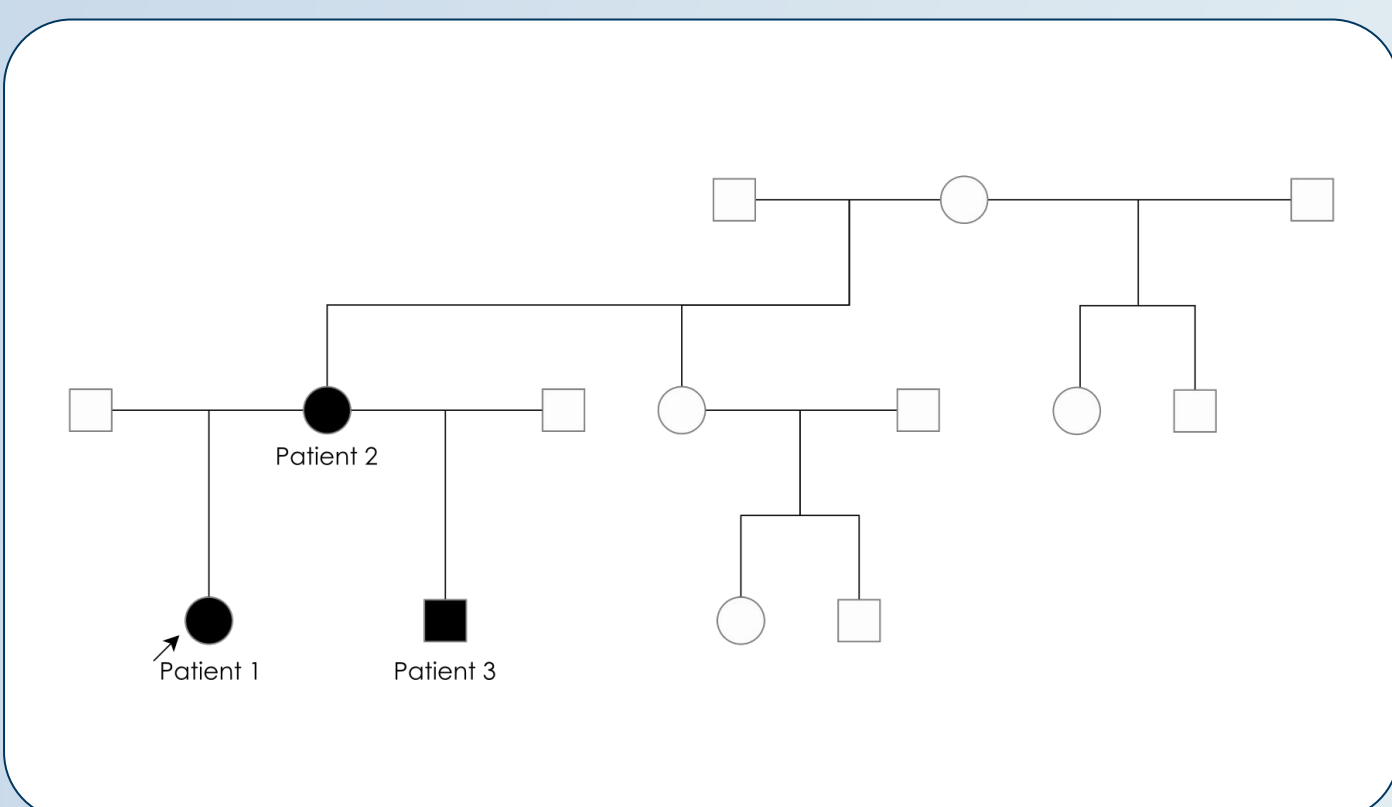
- 1 using the table
- 2 using the pedigree

Two specific modes:

- oncogenetic with parameterization of the fields allowing the export of the CanRisk file
- HPO/OrphaNet

Exportable to Boadicea and CanRisk files

Text generated from the pedigree in one click, directly usable in a report



Downloadable family pedigree (jpeg)

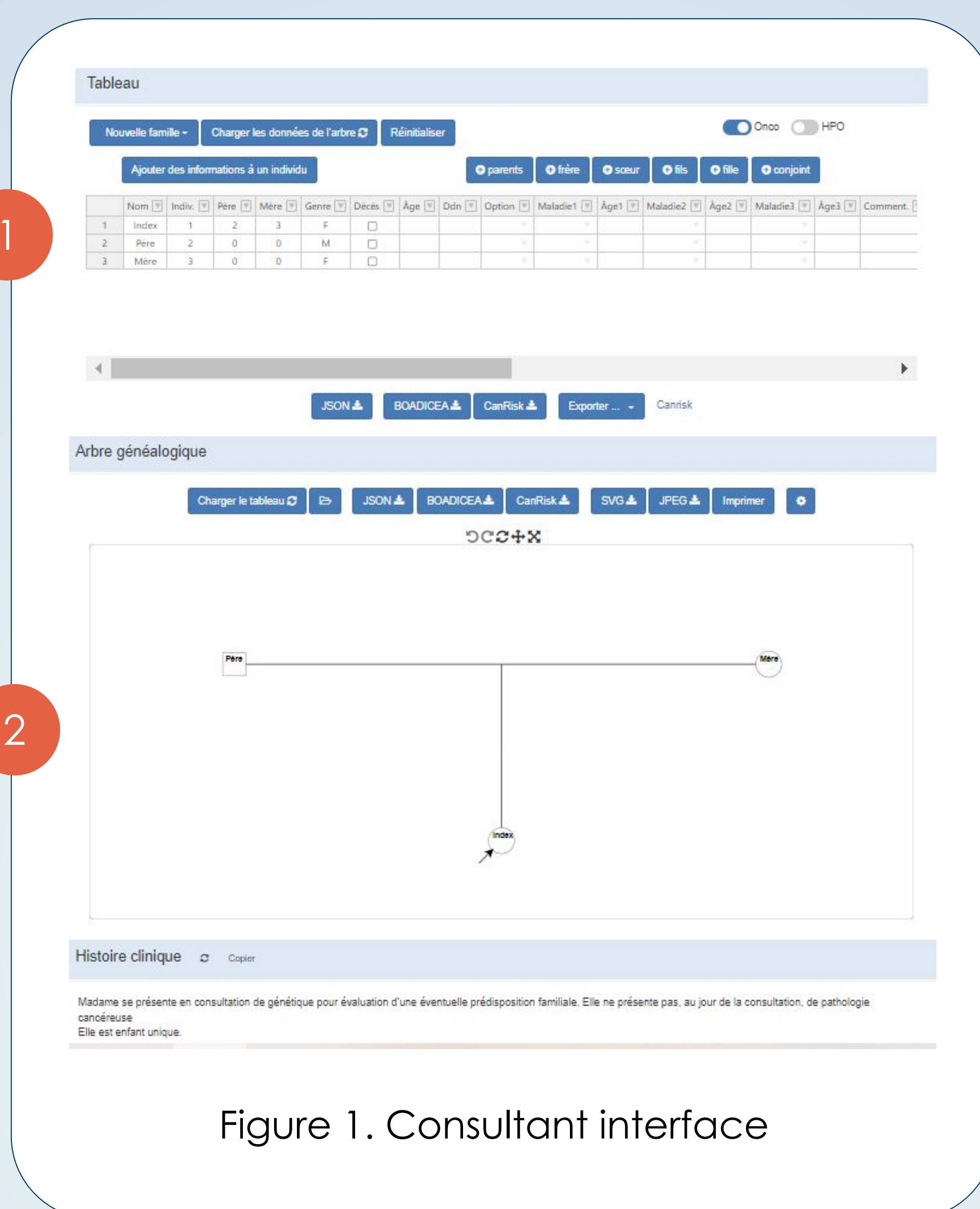
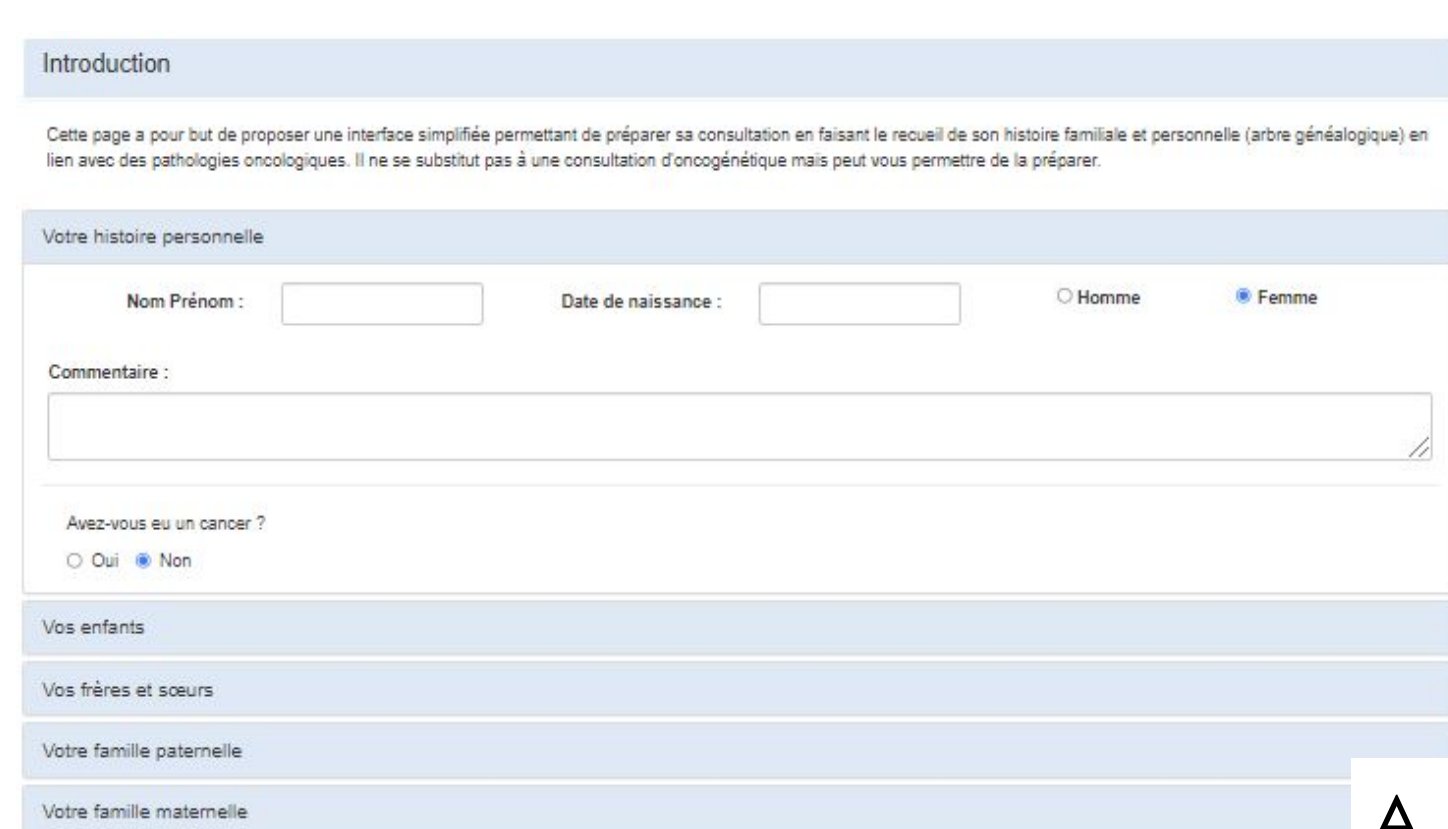


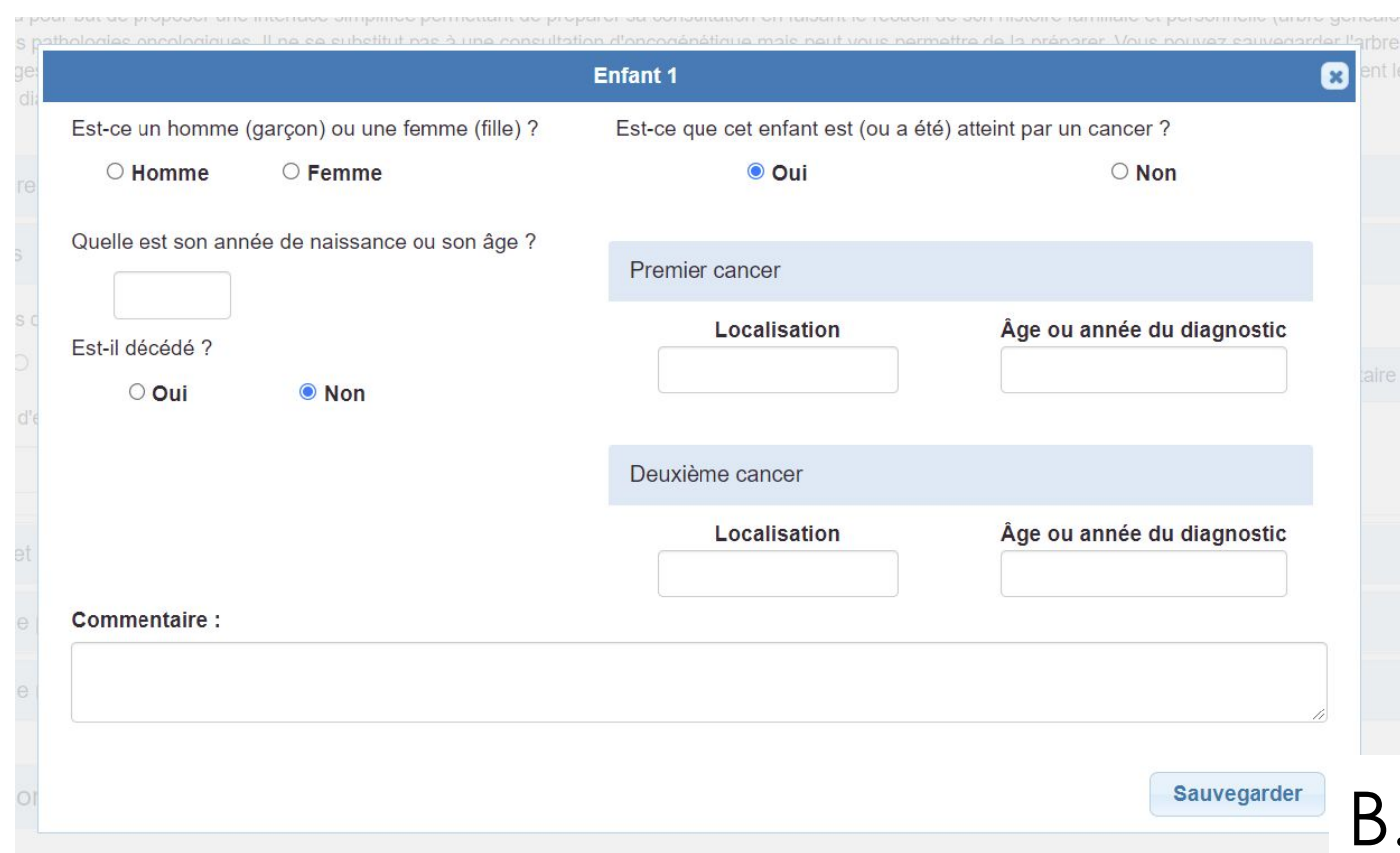
Figure 1. Consultant interface

- Module for fast generation of complex families
- Various export formats including :
 - JSON: high compatibility with other software
 - SVG: high quality and fully editable trees (for publication)

A dedicated patient interface



A.



B.

Figure 2. patient interface. A. General view of the interface.

B. Once the number of relatives has been entered, a dialogue box allows a simple but complete description of them.

- Allows the patient to create the family tree step by step before the consultation
- Interactive and intuitive dialogue boxes

Several minutes saved before, during and after the consultation!